

CO2Meter  
131 Business Center  
Building A, Unit 3

Toll Free 877.678.4259  
M-F 9-5pm EST  
Fax: 866.422.2356  
E-mail: [sales@co2meter.com](mailto:sales@co2meter.com)

# CO2Meter, Inc.

Indoor Air Quality Products

#### Portable CO2 Meters for Personal Safety

- Measure Indoor Air Quality
  - Easy to Use
  - Runs on 4 AA Batteries
- Starting at \$249.95



#### CO2 Meters Measure Indoor Air Quality

- Simple - Just Plug It In
  - Big, Bright LCD Readout
  - Log CO2 Levels on Your PC
- Starting at \$69.95



#### CO2 Sensors for New Product Development

- 1% to 100% CO2 Models
  - Self-Calibrating
  - OEM, Scientists & Engineers
- Starting at \$99.95



#### CO2 Data Loggers

- 1% to 100% CO2 Models
  - Collect Weeks of Data on Battery Power
  - Free Data Graphing Software
- Starting at \$374.95



CO2, CO, O2, VOC GAS SENSORS, MONITORS AND DETECTION FOR HOME, BUSINESS, RESEARCH AND INDUSTRY.

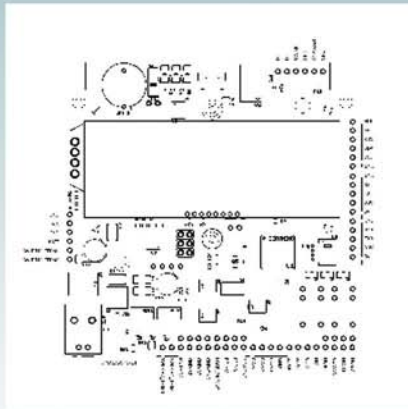
In today's health and energy conscious environment, measuring carbon dioxide, carbon monoxide and oxygen are important for safety and comfort, energy savings, plant growth, and to warn you about potentially toxic gas levels.

PRODUCT  
CATALOG

TABLE OF CONTENTS



Wall-Mount Devices	Page 4
Portable Devices	Page 8
Data-logging Devices	Page 12
Sensors	Page 13
OEM Platform	Page 19
New Products	Page 20
FAQ	Page 21



**How are US orders shipped?**

You can select United Parcel Service (UPS), Federal Express (FEDEX) or US Postal System (USPS) shipping at checkout. UPS and FEDEX orders from inventory received before 3pm EST are shipped the same day Monday through Friday. USPS orders are shipped the next day after you place the order Monday through Friday. Depending on your distance from Florida, Ground UPS, FEDEX and USPS delivers within 3-10 business days.

**I need delivery tomorrow. Can you ship overnight?**

Orders from inventory received before 3pm EST can be shipped UPS or FEDEX overnight Monday through Friday. If you need overnight delivery, call (877)678.4259 first, and we'll let you know if the product is in stock.

**How are Canadian orders shipped?**

We ship to Canada via UPS or FEDEX. USPS is no long offer as of June 1 2011.

**How are International orders shipped?**

We ship anywhere in the world UPS or FEDEX operate.

**How do I track my order?**

We will email you a UPS or FEDEX tracking number the same day we ship your order. If you haven't received the email within 2 business days of ordering, send us an e-mail and we'll track it down for you.

**Do you accept POs?**

Businesses, wholesalers, international business customers, research facilities, governmental units, the military, schools and universities can email a PO to sales@co2meter.com or fax to (866)422-2356 including item(s) requested, quantities, contact information, e-mail address and shipping instructions. We will e-mail back to you a Sales Order with total cost and instructions to complete payment.

**Can I pay by check/MO/wire transfer/Net30 or use another carrier?**

Most business, wholesale and international business customers who place an order by PO will be asked to pre-pay their initial order by credit card, check, money order, or wire transfer. After the first order, we may offer Net30 terms to businesses depending on their credit history. Call (877) 678-4259 M-F 9-5 EST or email sales@co2meter.com to request a credit application. A minimum \$1,000 order is required for international wire transfers. If you wish to use your own carrier, include the carrier name and account number on your PO.

**Is my credit card information safe with you?**

All our transactions are handled by Paypal. We never see your credit card number, nor do we store your credit card information. Paypal is extremely safe, highly rated and used by more people than any other online payment system in the world. option) any part or product that fails under normal use. To take advantage of this warranty, the product must be returned to CO2Meter.com at your expense. If, after examination, we determine the product is defective, we will repair or replace it at no additional cost to you. This warranty does not cover any products that have been subjected to misuse, neglect, accident, modifications or repairs by you or by a third party. No employee or reseller of CO2Meter.com's products may alter this warranty verbally or in writing. Our products carry either a 90 day or 1 year manufacturer's warranty, specified on the product page. All warranties beginning from the date of shipment to the buyer. See individual product page for details.

**What is your return policy?**

If the product fails under normal use during the warranty period, a RMA (Return Material Authorization) number must be obtained from CO2Meter.com. After the item is received CO2Meter.com will repair or replace the item at our discretion. To obtain a RMA (Return Material Authorization), call CO2Meter.com at (877) 678-4259. When requesting a RMA please provide reason for return and original order number. If we determine that the product failed because of improper use (water damage, dropping, tampering, electrical damage etc.), or if it is beyond the warranty date, we will inform you of the cost to fix or replace the product.

**What is your refund policy?**

If, after receiving the product you determine that it does not meet your needs, a RMA (Return Material Authorization) number must be obtained from CO2Meter.com within 10 days of delivery. To be considered for a refund, original box with all parts, manual, and packaging must be included. The item must be received at CO2Meter.com in working condition void from any damage, misuse or tampering. To obtain a RMA (Return Material Authorization) for a full refund less shipping costs call CO2Meter.com at (877) 678-4259. Any missing parts or damage will result in less than the full purchase price being refunded. All returns for refund after 10 days will incur a 25% restocking fee. No item will be accepted for a refund after 30 days.

**How do I dispose of Calibration Gas Cylinders?**

The manufacturer will take empty cylinders back to be recycled at no charge. Although the cylinders can be safely disposed of in a landfill, we strongly encourage recycling.



**eSense FAI Wall-Mounted CO2 Alarm for LEED**

The eSense LEED Fresh Air Indicator (FAI) is a simple, low-cost and maintenance-free carbon dioxide alarm designed to be installed in areas like office buildings or classrooms where the carbon dioxide levels need to be monitored for indoor air quality.

**eSense Wall-Mounted CO2 Alarm for OSHA**

The eSense Fresh Air Indicator (FAI) is a low-cost and maintenance-free carbon dioxide alarm designed to be installed in factories, breweries, wineries, CO2 storage closets or anywhere carbon dioxide levels need to be monitored for personal safety.



**eSense Programmable Wall-Mounted CO2 Alarm**

The eSense Programmable CO2 Alarm lets you program CO2 levels for the green (good), yellow (warning) and red (caution) LEDs as well as the 80Db alarm.



**Wall-Mount CO2 Level Controller**

The CO2 controller doesn't just measure CO2 levels - it controls them.  
Control a Fan or Damper to Remove CO2  
Control CO2 Delivery System to Increase CO2  
Rugged High-Voltage and High-Amperage Relay



**aSense Wall-Mount Incubator**

The aSENSE Incubator based on the K45 platform is an infrared carbon dioxide transmitter for installation in the climate zone, or in a ventilation duct. The linear output functions are pre-programmed for transmitting



**CO2 Rechargeable 100% Data logging in NEMA4 Wall Box**

The CM-0052 rechargeable data logger is designed for both permanent and temporary installations in industrial settings. It features a built-in pump for sampling, a rechargeable lithium ion battery pack, data logging memory, and one of CO2Meter's high-accuracy NDIR sensors.



**CO2/O2 Wall Monitor in NEMA4 Box w Data Logging**

The CM-0053 Combination CO2/O2 unit is designed for many years of robust, accurate operation. It features industry standard 4-20mA outputs compatible with standard industrial equipment, MODBUS RS-495 communication, and USB communication with our DAS collection software.



**TR250Z Wall-Mount Oxygen Sensor**

The TR250Z is a long life 0-25% oxygen level transmitter that provides multiple analog linear outputs of O2 concentrations. It is designed to be rugged, maintenance-free and can be calibrated in normal air of any known oxygen concentration.





**eSENSE II WALL TRANSMITTER**

The eSense II is a cost-effective carbon dioxide transmitter designed to be installed in areas like office buildings or classrooms where carbon dioxide levels are monitored to determine occupancy levels



**aSENSE WALL VENTOSTAT (0-2000PPM CO2 & TEMP)**

The aSense is an all-digital, low-cost CO2 and temperature transmitter for installation in a building's climate zone. It measures both carbon dioxide concentration and temperature in real time, and returns the values to the HVAC system.



**aSENSE GH WALL TRANSMITTER (0-2000PPM CO2)**

The aSense GH measures carbon dioxide and temperature in the air, then sends the readings to your climate control system. It can also be used as a stand-alone device to drive an exhaust fan or an air



**aSENSE MIII CO2 & CO WALL OR DUCT-MOUNT TRANSMITTER**

The aSense MIII combines carbon dioxide and carbon monoxide sensors in a single package. It measures CO and CO2 in real time, and can use the levels to trigger an alarm, turn on a ventilation fan, or return the values to a HVAC system.



**aSENSE VAV-K WALL OR DUCT-MOUNT TRANSMITTER**

The aSENSE™- VAV is a stand alone controller with built-in sensors for temperature and carbon dioxide. The unit measures both CO2 concentration and temperature in ambient air, transforms the data into analog and digital output signals, which are used for controlling air supply on demand.



**aSENSE WALL-MOUNT IP54 ALARM**

The aSENSE™ Alarm is a state-of-the-art infrared and maintenance-free carbon dioxide alarm for personal safety. It mounts in areas where the carbon dioxide level is a potential danger. It measures the carbon dioxide concentration in the ambient air and alarms with sound and light when the levels are exceeding the defined levels.



**eSENSE FAI WALL POWER SUPPLY**

120VAC to 24VAC  
Screws into US Standard Wall Socket to Provide Permanent Mount  
Works with both eSense FAI LEED and OSHA models



**RS485 CABLE & M-12 PRE-WIRED CABLE FOR WALL-MOUNTED UNITS**

These high-quality cables are for communicating with the Level Controller & CO2/O2 Wall Mount via RS485. They allow you to communicate via USB, 4-20 mA & 0-10V on your computer to our DAS software. With it, you can change the parameters of the sensor to your specifications.





**TIM10 CO2, TEMPERATURE & HUMIDITY MONITOR**

The TIM10 continuously shows carbon dioxide, temperature and relative humidity levels so you can monitor the quality of air in your home, office or indoor greenhouse. Just plug it in – the TIM10 turns on instantly, is self-calibrating, and is designed to last for years.



**TIM12 CO2, TEMP, RH MONITOR/DATA LOGGER**

All the great features of the TIM10 plus data logging! The TIM12 continuously shows carbon dioxide, temperature and relative humidity levels so you can monitor the quality of air in your home, office or indoor greenhouse. Just plug it in – the TIM12 turns on instantly, is self-calibrating, and is designed to last for years.



**pSENSE PORTABLE CO2 METER**

With up to 24 hours battery life and easy to use with gloves on, the pSense-Plus portable carbon dioxide meter works perfectly as a personal safety alarm unit in hazardous environments, or wherever carbon dioxide is produced, stored, generated and used.



**pSENSE HIGH ACCURACY (±30 PPM) PORTABLE CO2 METER**

With up to 24 hours battery life and easy to use with gloves on, the High Accuracy portable carbon dioxide meter works perfectly for precision monitoring of CO2, temperature, and relative humidity in any location and it works great as a personal safety alarm unit in hazardous environments.



**AQ100 CO2, TEMP & HUMIDITY METER / LOGGER**

The AQ100 is a simple to use solution for monitoring CO2 in both wall-powered and PC-connected applications. Just plug it into the wall, it starts measuring CO2 instantly, is self-calibrating, and is designed to last for years.



**USB CO2 PROBE METER/DATA LOGGER 1/ 30/ 100%**

The Probe is designed for students, teachers or indoor greenhouse growers who need a rugged and easy-to-use 0-10,000 ppm (1%), 0-300,000 ppm (30%) or 100% CO2 meter and data logger.



**1/5/30/65/100% CO2 SAMPLING DATA LOGGER**

The Portable CO2 Sampling Data Logger is designed to log carbon dioxide through the sample draw pump in inaccessible areas and ambient temperature, and relative humidity .



**1/5/30/65/100% SAMPLE DRAW CO2 METER**

The Portable Sample Draw CO2 Meter is designed to measure carbon dioxide in real time in inaccessible areas. Use it for:  
Fermentation vats & barrels  
Biological incubators  
CO2 leak detection





**RECHARGEABLE DATA-LOGGER: 1% CO2, TEMP & %RH (K33 ELG)**

The K-33 ELG Portable Environmental logger is designed to measure carbon dioxide (0-10,000ppm), temperature, and relative humidity in remote locations. It can “wake up”, take readings, store them in memory, and go back to sleep.



**DATA-LOGGER WITH DISPLAY: 1% CO2, TEMP & %RH (K33 ELG)**

The K-33 ELG Portable Environmental logger is designed to measure carbon dioxide (0-10,000ppm), temperature, and relative humidity in remote locations. It can “wake up”, take readings, store them in memory, and go back to sleep.



**RECHARGEABLE DATA-LOGGER: 30% CO2, TEMP & %RH (K33 BLG)**

The K-33 BLG Portable Bio-logger is designed to measure carbon dioxide, temperature, and relative humidity for biological applications. It can “wake up”, take readings, store them in memory, and go back to sleep.



**DATA-LOGGER WITH DISPLAY: 30% CO2, TEMP & %RH (K33 BLG)**

The K-33 BLG Portable Bio-logger is designed to measure carbon dioxide, temperature, and relative humidity for biological applications. It can “wake up”, take readings, store them in memory, and go back to sleep.



**SENSEAIR HANDHELD CO2 ALARM/DATA LOGGER**

The Senseair hand-held CO2 Meter and data logger is an extremely small, light weight, battery operated precision instrument designed to measure the carbon dioxide concentration and temperature in surrounding air.



**SENSEAIR ALARM HANDHELD (3% CO2)**

The Senseair Alarm hand-held CO2 Meter is an extremely small, light weight, battery operated precision instrument designed to warn the user when carbon dioxide concentrations reach dangerous levels.



**CALIBRATION KIT FOR RH SENSORS**

These reusable jars are made to easily calibrate relative humidity in the pSense Portable CO2 Meter and the pSense High Accuracy Portable CO2 Meter. To use simply unstopper the jar, insert the probe into the jar, and begin calibration. It's that easy!



**DATA LOGGER KIT FOR pSENSE PORTABLE METER**

Includes:

120VAC - 6VDC Transformer (see below)

Custom Serial to USB Cable

MS-Windows Software CD





### DATA LOGGER ELG/BLG REPLACEMENT CABLE

These high-quality cables are replacement cables for our ELG, BLG and Sampling data loggers, as well as our Sample Draw meters. They allow you to communicate via USB on your computer to our DAS software.

---



### USB 2.0 EXTENSION CABLE

These active USB extension cables are designed to increase the distance you can place your AQ100 or Probe USB-powered CO2 meter up to 64 feet away from your PC.

Each 5 meter cable (16 feet) comes with its own 'choke' to eliminate cross-talk, yet still meet the USB2.0 specifications.

---



### REMOTE CO2 LOGGER W/ RELAY- 1% OR 30%

The Remote Data-logger with Display is designed for applications where CO2 needs to be measured in a remote location, 100 feet or further, while being displayed locally on a data-logging head unit. It includes a CO2 transmitter that can be wall-mounted in a permanent installation and a head unit that displays the current CO2 reading.



### K-30 10,000PPM CO2 SENSOR

The K-30 Sensor Module is a maintenance-free transmitter module intended to be built into different host devices that require CO2 monitoring data. It is an accurate, yet low-cost solution for OEMs who want to integrate CO2 sensing into their products. The compact size, low-power requirements and multiple output options are intended to be easily implemented into analog or microprocessor-based controls and equipment.

---



### K-30-1%-STA, K30-1%-FS, K30-3% CO2 SENSOR DEVELOPMENT KIT

The K-30 Devkit includes a standard K-30 sensor and a USB cable that provides power to the sensor as well as connectivity to the supplied software application. This allows an engineer to use the K-30 in a rapid development, evaluation, or prototyping environment.

---



### K-30-FR FAST RESPONSE: 2 Hz 1% CO2 SENSOR

The K-30-FS Sensor Module is a maintenance-free transmitter module intended for high sample rates (2 HZ) with minimal noise. It is an accurate, yet low-cost solution for OEMs who want to integrate CO2 sensing into their products.

---



### K-30 3% CO2 SENSOR

The K-30 3% Sensor Module is a maintenance-free transmitter module intended to be built into different host devices that require CO2 monitoring data. It is an accurate, yet low-cost solution for OEMs who want to integrate CO2 sensing into their products. The compact size, low-power requirements and multiple output options are intended to make this device an easy add-on component to other microprocessor-based controls and equipment.





#### K-33 ICB 30% CO2 SENSOR

The K-33 ICB CO2 sensor is designed to measure percentage of carbon dioxide up to 30%. It is useful for biological or scientific applications where artificially high levels of CO2 must be maintained in an enclosed apparatus.



#### K-33 ICB CO2 SENSOR DEVELOPMENT KIT

The K-33 ICB Devkit includes a K-33 30% CO2 sensor with a pre-soldered connector and a Serial to USB cable that provides power to the sensor as well as connectivity to the software development kit. This allows engineers to use the K-33 ICB in a rapid development, evaluation, or prototyping environment.



#### K-33 ELG 1% CO2/TEMP/RH DATA LOGGING SENSOR

The K-33 ELG (environmental logger) is designed to measure up to 10,000ppm (1%) carbon dioxide, temperature, and relative humidity in remote locations. Because of its ultra-low power requirements, it can “wake up”, take a sample, store the data in memory, and go back to sleep. Using battery power only, the sensor can be placed in the field for days or weeks at a time.



#### K-33 ELG CO2 SENSOR DEVELOPMENT KIT

The K-33 ELG Devkit includes a K-33 ELG sensor with soldered-on UART connector and a UART to USB cable that provides power to the sensor as well as connectivity to the SDK. This allows engineers to use the K-33 ELG in a rapid development, evaluation, or prototyping environment.



#### K-33 BLG 30% CO2/TEMP/RH DATA LOGGING SENSOR

The K-33 BLG (bio-logger) sensor is designed to measure percentage of carbon dioxide up to 30%, as well as temperature and humidity. This makes it an excellent sensor for enclosed applications like incubators.



#### K-33 BLG CO2 SENSOR DEVELOPMENT KIT

The K-33 BLG Devkit includes a K-33 BLG sensor with soldered-on UART connector and a UART to USB cable that provides power to the sensor as well as connectivity to the SDK. This allows engineers to use the K-33 BLG in a rapid development, evaluation, or prototyping environment.



#### S8 MINIATURE CO2 SENSOR & DEVELOPMENT KIT

The S8 Miniature CO2 Sensor by SenseAir is the smallest non-dispersive infrared (NDIR) sensor on the market today. Thanks to a new optical path design, it can accurately measure carbon dioxide levels up to 2% with extended range measurement up to 3.2% by volume.



#### COZIR WIDE RANGE 5-100% CO2 SENSOR

The GSS COZIR is an ultra low power (3.5mW), high performance CO2 sensor, ideally suited for battery operation, portable instruments and HVAC. Based on GSS IR LED and Detector technology, and innovative optical designs, the COZIR offers the lowest power NDIR sensor available. Optional temperature, humidity and light sensing are available.





### COZIER WIDE RANGE SENSOR DEVELOPMENT KIT

The GSS Development Kit includes a GSS COZIER sensor with a pre-soldered connector and a Serial to USB cable that provides power to the sensor as well as connectivity to our DAS software. This allows developers to use the COZIER sensor in a rapid development, evaluation, or prototyping environment.



### COZIER AMBIENT 0-2% CO2 SENSOR

The GSS COZIER is an ultra low power (3.5mW), high performance CO2 sensor, ideally suited for battery operation, portable instruments and HVAC. Based on GSS IR LED and Detector technology, and innovative optical designs, the COZIER offers the lowest power NDIR sensor available. Optional temperature, humidity and light sensing are available.



### COZIER AMBIENT SENSOR DEVELOPMENT KIT

The GSS Development Kit includes a GSS COZIER sensor with a pre-soldered connector and a Serial to USB cable that provides power to the sensor as well as connectivity to our free DAS software. This allows developers to use the COZIER sensor in a rapid development, evaluation, or prototyping environment.



### iAQ-2000 INDOOR AIR QUALITY (VOC) SENSOR

The iAQ2000 is designed to sense the level of volatile organic compounds (VOCs) such as smoke, cooking odors, bio-effluence and pollutants including:

CO, CH4, LPG, Alcohols, Ketones, Organic acids, Amines, Aliphatic hydrocarbons, and Aromatic hydrocarbons



### SENSOR TUBE CAP KIT

The tube cap kit is designed to transform the K-30 or the K-33ELG sensor from a diffusion-type sensor into a remote sensor.

The tube cap kit attaches directly to the top of the sensor with two self-tapping screws.



### EC100 0-25% OXYGEN SENSOR

The EC100-O2 board is a galvanic oxygen sensor designed for integration in OEM products that require oxygen monitoring capabilities. It provides a high-precision reading of oxygen concentration by pairing advanced signal processing algorithms with precise electronics and high-quality oxygen electrochemical sensors.



### I2C SENSOR COMMUNICATION CABLE

This cable enables you to communicate with the SenseAir K22, K30 and K33 sensors using the I2C protocol. It includes a Universal edge connector, I2C Bridge, I2C to USB cable, and Standard USB Cable (1m)



### COZIER SENSOR TUBE CAP ADAPTER

The Tube Cap Adapter converts the Cozier CO2 Sensor from diffusion sampling to draw sampling. Machined to high tolerances to ensure a tight fit and no leaks.

Easy to install with screwdriver only, no sensor modifications required





### SENSOR PUMP KIT / FILTERS / TRAPS

The Sensor Pump Kit contains all the accessories you need to draw samples using our K30 and K33 sensors or Sensor SDKs.

The kit includes: Pump, Tubing, In-line moisture trap, and Pump battery pack

This kit works with:

- K30 sensor with Tube Cap Kit
- K30 sensor SDK with Tube Cap Kit
- K33 ICB Sensor
- K33 ICB Sensor SDK
- K33 ELG Sensor with Tube Cap Kit
- K33 ELG Sensor SDK with Tube Cap Kit
- K33 BLG Sensor
- K33 BLG Sensor with SDK



### SDK / SENSOR REPLACEMENT CABLES

These high-quality cables are replacements for cables included with our SDKs. They allow you to communicate via USB on your computer to our DAS software. The cables contain intelligent circuitry that properly facilitates sensor communication. This circuitry is molded into the USB connector of the cable for transparent operation.



For the K-30, K-33 ELG/BLG/ICB, or GSS COZIR

### AQ500 OEM DEVELOPMENT KIT

The AQ500V3 development kit gives you the power to develop custom solutions using our sensors and development platform. Our kit gives you the tools you need to evaluate our products, before scaling production to a unit designed to meet your exact specifications. Please contact [sales@co2meter.com](mailto:sales@co2meter.com) for volume pricing, custom application development, and custom configuration options.



### RO100 RELAY OUTPUT MODULE

The RO100 is an expansion module designed to work with the AQ500 Development Platform. It enables the control of large industrial loads, with 4 3-contact, type C relays, each capable of handling up to 10A at 277VAC. Please contact [sales@co2meter.com](mailto:sales@co2meter.com) for volume pricing, custom application development, and custom configuration options



### AF100 Analog I/O Module

The AF100 is an expansion module designed to work with the AQ500 Development Platform. It enables the AQ500 controller to accept up to 4 analog inputs, and provide 4 analog outputs, suitable for interfacing with industrial sensors. The inputs can read 4-20mA loop sensors commonly found in industrial settings, and the outputs can drive 4-20mA receivers with a driving voltage up to VIN.



### 24VDC POWER SUPPLY

For use in powering our controller and optional modules and sensors we have made available a 24VDC power supply, in both a wall-pluggable, and mountable terminal configuration.

Guaranteed to work with our line of controllers, modules and remote sensors.

Mountable terminal supply provides enough current to power many remote sensors.





**NEMA WALL-MOUNT CO2 LEVEL CONTROLLER**

Most inexpensive CO2 controllers skip on parts like CO2 sensors and relays. The CO2 Level Controller is different: it combines our accurate K-30 NDIR infra-red CO2 sensor with an industrial-quality relay capable of controlling up to 10 amps and 250 volts.

**DEVICE CALIBRATION KIT**

The device calibration kit is a custom built device designed to allow the customer to calibrate their own data loggers, sensors, level controllers, probes, and/or the AQ100 unit. The device is an airtight enclosure that can fit up to two units for simultaneous calibration. It includes all the connections necessary to both power the units and connect them to a computer without having to breach the enclosure.

**cSENSE WALLMOUNT CO2, TEMP, & RH MONITOR WITH RELAY**

The cSense continuously shows carbon dioxide, temperature and relative humidity levels so you can monitor the quality of air in your home, office or indoor greenhouse. Just plug it in – the cSense turns on instantly, is self-calibrating, and is designed to last for years.

**How are US orders shipped?**

You can select United Parcel Service (UPS), Federal Express (FEDEX) or US Postal System (USPS) shipping at checkout. UPS and FEDEX orders from inventory received before 3pm EST are shipped the same day Monday through Friday. USPS orders are shipped the next day after you place the order Monday through Friday. Depending on your distance from Florida, Ground UPS, FEDEX and USPS delivers within 3-10 business days.

**I need delivery tomorrow. Can you ship overnight?**

Orders from inventory received before 3pm EST can be shipped UPS or FEDEX overnight Monday through Friday. If you need overnight delivery, call (877)678.4259 first, and we'll let you know if the product is in stock.

**How are Canadian orders shipped?**

We ship to Canada via UPS or FEDEX. USPS is no longer in offer as of June 1 2011.

**How are International orders shipped?**

We ship anywhere in the world UPS or FEDEX operate.

**How do I track my order?**

We will email you a UPS or FEDEX tracking number the same day we ship your order. If you haven't received the email within 2 business days of ordering, send us an e-mail and we'll track it down for you.

**Do you accept POs?**

Businesses, wholesalers, international business customers, research facilities, governmental units, the military, schools and universities can email a PO to [sales@co2meter.com](mailto:sales@co2meter.com) or fax to (866)422-2356 including item(s) requested, quantities, contact information, e-mail address and shipping instructions. We will e-mail back to you a Sales Order with total cost and instructions to complete payment.

**Can I pay by check/MO/wire transfer/Net30 or use another carrier?**

Most business, wholesale and international business customers who place an order by PO will be asked to pre-pay their initial order by credit card, check, money order, or wire transfer. After the first order, we may offer Net30 terms to businesses depending on their credit history. Call (877) 678-4259 M-F 9-5 EST or email [sales@co2meter.com](mailto:sales@co2meter.com) to request a credit application. A minimum \$1,000 order is required for international wire transfers. If you wish to use your own carrier, include the carrier name and account number on your PO.

**Is my credit card information safe with you?**

All our transactions are handled by Paypal. We never see your credit card number, nor do we store your credit card information. Paypal is extremely safe, highly rated and used by more people than any other online payment system in the world.

**Can I just call and place an order?**

If you don't trust the internet or you aren't sure which product best suits your needs, call us at (877) 678-4259 M-F 9-5 EST and we can take your order over the phone.

**What kind of warranty do you offer?**

CO2Meter.com warrants our products to be free from defects in materials and workmanship when used for their intended purpose, and agrees to fix or replace (at our option) any part or product that fails under normal use. To take advantage of this warranty, the product must be returned to CO2Meter.com at your expense. If, after examination, we determine the product is defective, we will repair or replace it at no additional cost to you. This warranty does not cover any products that have been subjected to misuse, neglect, accident, modifications or repairs by you or by a third party. No employee or reseller of CO2Meter.com's products may alter this warranty verbally or in writing. Our products carry either a 90 day or 1 year manufacturer's warranty, specified on the product page. All warranties beginning from the date of shipment to the buyer. See individual product page for details.

**What is your return policy?**

If the product fails under normal use during the warranty period, a RMA (Return Material Authorization) number must be obtained from CO2Meter.com. After the item is received CO2Meter.com will repair or replace the item at our discretion.

To obtain a RMA (Return Material Authorization), call CO2Meter.com at (877) 678-4259. When requesting a RMA please provide reason for return and original order number. If we determine that the product failed because of improper use (water damage, dropping, tampering, electrical damage etc.), or if it is beyond the warranty date, we will inform you of the cost to fix or replace the product.

**What is your refund policy?**

If, after receiving the product you determine that it does not meet your needs, a RMA (Return Material Authorization) number must be obtained from CO2Meter.com within 10 days of delivery. To be considered for a refund, original box with all parts, manual, and packaging must be included. The item must be received at CO2Meter.com in working condition void from any damage, misuse or tampering. To obtain a RMA (Return Material Authorization) for a full refund less shipping costs call CO2Meter.com at (877) 678-4259. Any missing parts or damage will result in less than the full purchase price being refunded. All returns for refund after 10 days will incur a 25% restocking fee. No item will be accepted for a refund after 30 days.

**How do I dispose of Calibration Gas Cylinders?**

The manufacturer will take empty cylinders back to be recycled at no charge. Although the cylinders can be safely disposed of in a landfill, we strongly encourage recycling.





# CO2Meter, Inc.

## **CO2 METER SEEKING DISTRIBUTORS IN US AND WORLDWIDE**

CO2Meter.com is actively seeking distributors for our product line in the US and worldwide. Currently we have customers in over 50 countries throughout Europe, Asia, South America, Africa, as well as Australia and Canada. Our goal is to provide current and new customers with even better service and turn-around time.

We offer competitive wholesale discounts on products, detailed documentation that can easily be localized, and highly skilled support personnel to get you up and running quickly.

To learn more, send a list of products and sales estimates to Ms. Irene Hicks at [ireneh@co2meter.com](mailto:ireneh@co2meter.com).

## **SE BUSCAN DISTRIBUIDORES INTERNACIONALES — HAGA CLIC AQUÍ PARA MÁS INFORMACIÓN!**

CO2Meter.com está en búsqueda activa de distribuidores internacionales para nuestra línea de productos. Actualmente tenemos clientes en más de 50 países a través de Europa, Asia, Sur América y África, así como en Australia y Canadá. Nuestra meta es proveerles a clientes actuales y nuevos con un aún mejor servicio y tiempo de vuelta.

Ofrecemos descuentos competitivos en productos al por mayor, documentación detallada que puede ser fácilmente localizada y un personal de apoyo altamente cualificado para ayudarle a empezar rápidamente.

Para aprender más, envíe una lista de productos y estimados de venta a la Sra. Irene Hicks a la siguiente dirección: [ireneh@co2meter.com](mailto:ireneh@co2meter.com).

# Indoor Air Quality Products