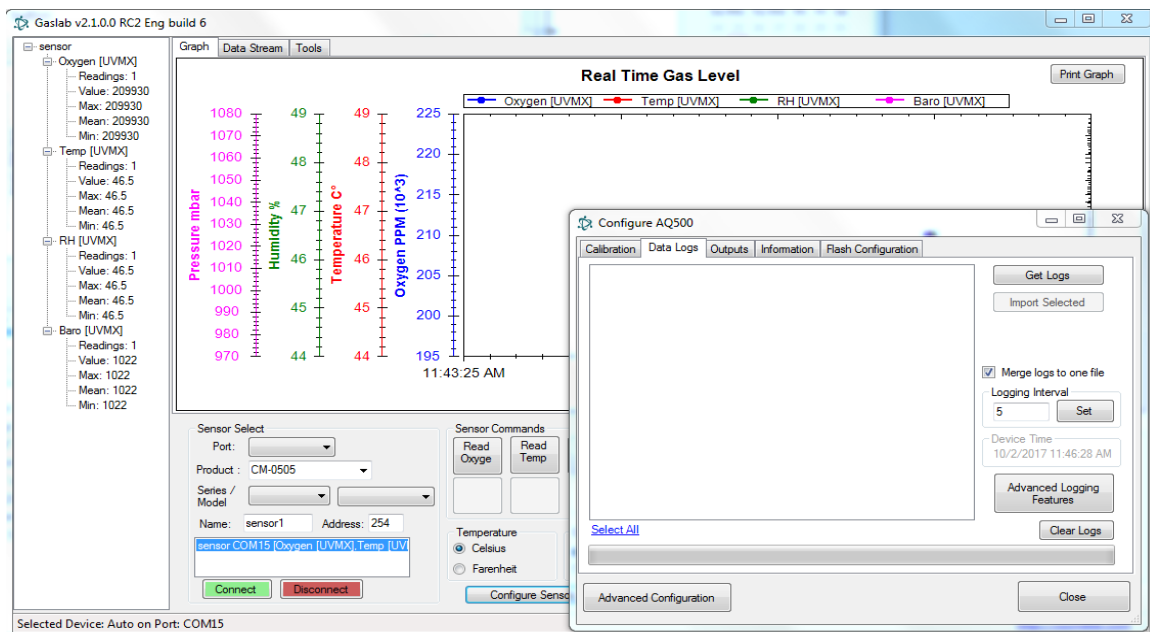


Interfacing CM-0505 Oxygen Data Logger with GasLab™ Software

Configuration - Measuring Oxygen - Managing Data

CM-0505 Initial Configuration - Set Logging Interval, Time and Date

1. Connect CM-0505 to 6 Volt Power Adapter.
2. Connect USB cable from GasLab Computer to CM-0505.
3. Press Power Button and wait for CM-0505 display to turn green.
4. Press LOG Button.
5. Open GASLAB program.
6. Open "Port:" menu and select the highest numerical COM port.
7. Open "Product:" menu and select "CM-0505"
8. Select the Green "Connect" button.



9. Select the "Configure Sensor" Button.
10. Select the "Data Logs" Tab.
11. Set "Logging Interval" to desired interval (5 Seconds is the factory default)
12. Select the "Set" button
13. Verify "Device Time" is set to the correct time/date.
14. Close "Configure AQ500" window.

Measuring O2, Collecting Data, Creating Log Files

The CM-0505 can store Data Log Files in Internal Memory.

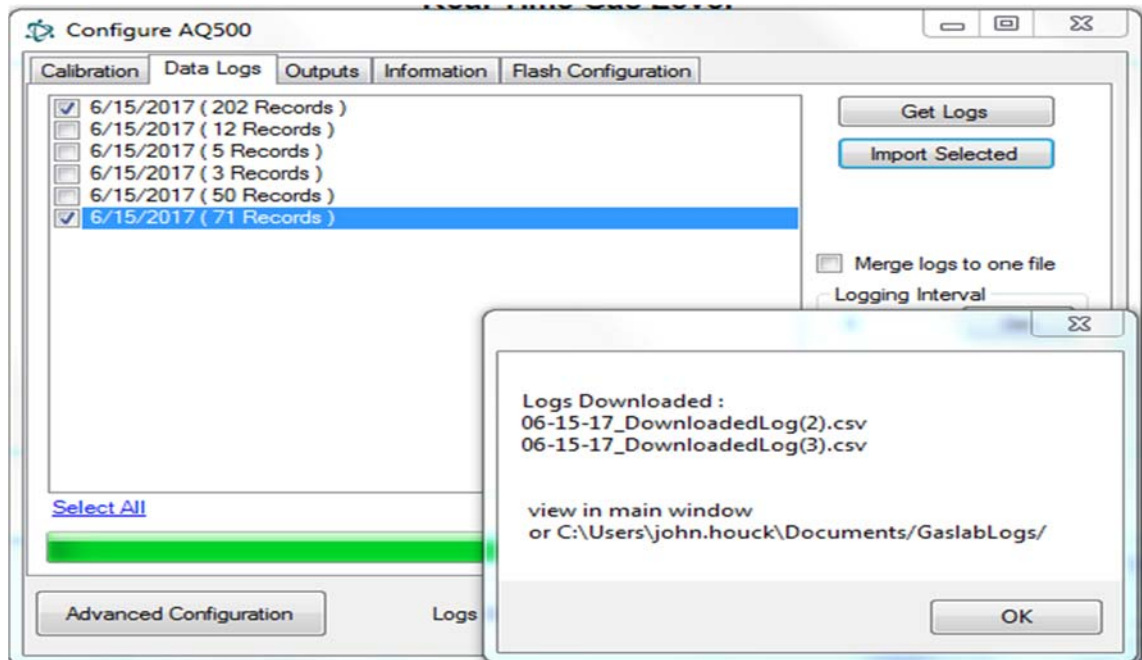
1. Connect “In” and “Out” ports to gas source as required.
2. Verify Pump is running and Display reads “Log: On”



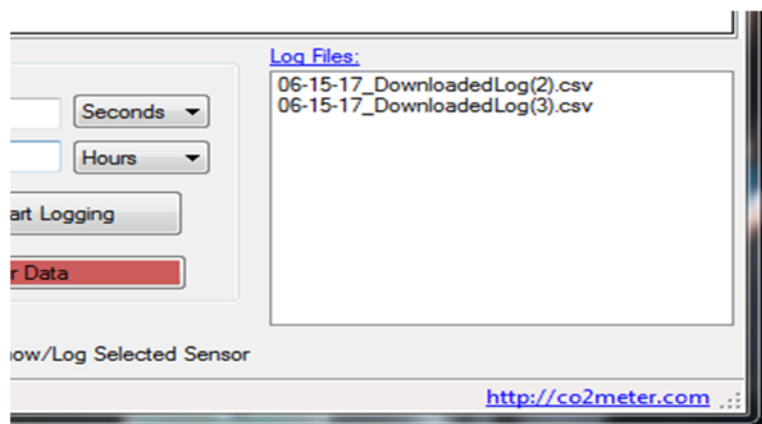
3. Data Logger will record one reading every 5 seconds. (Factory Default)
4. At the end of each test, turn Log Switch OFF.
5. Each time the Log Switch is turned ON (or power is cycled) a new log file will be created.

Downloading Log Files from CM-0505 Memory to the GasLab Computer

1. Connect CM-0505 to GasLab computer.
2. Run GASLAB program.
3. Select "Configure Sensor" Button.
4. Select "Data Logs" Tab.
5. Select "Get Logs" Button and wait for files to appear in window.
6. Double click the file(s) you wish to import. (Place a check mark in the box)
7. UN-check the box marked "Merge Logs to one file".
8. Select "Import Selected".
9. Note the name of the file and select OK.



10. Verify it has been imported into GasLab's "Log Files" Window.



11. Single click on the file to display GasLab Graph.
12. Double click on the file to display data in Excel.

Clearing Log Files from CM-0505 Memory

“Clear Logs” ONLY if you are certain all critical Log Files have been downloaded and stored on the GasLab Computer.

1. Select “Configure Sensor” Button.
2. Select “Data Logs” Tab.
3. Select “Clear Logs” button.
4. Select “Yes”
5. Verify CM-0505 Display reads “Erasing Logs”.