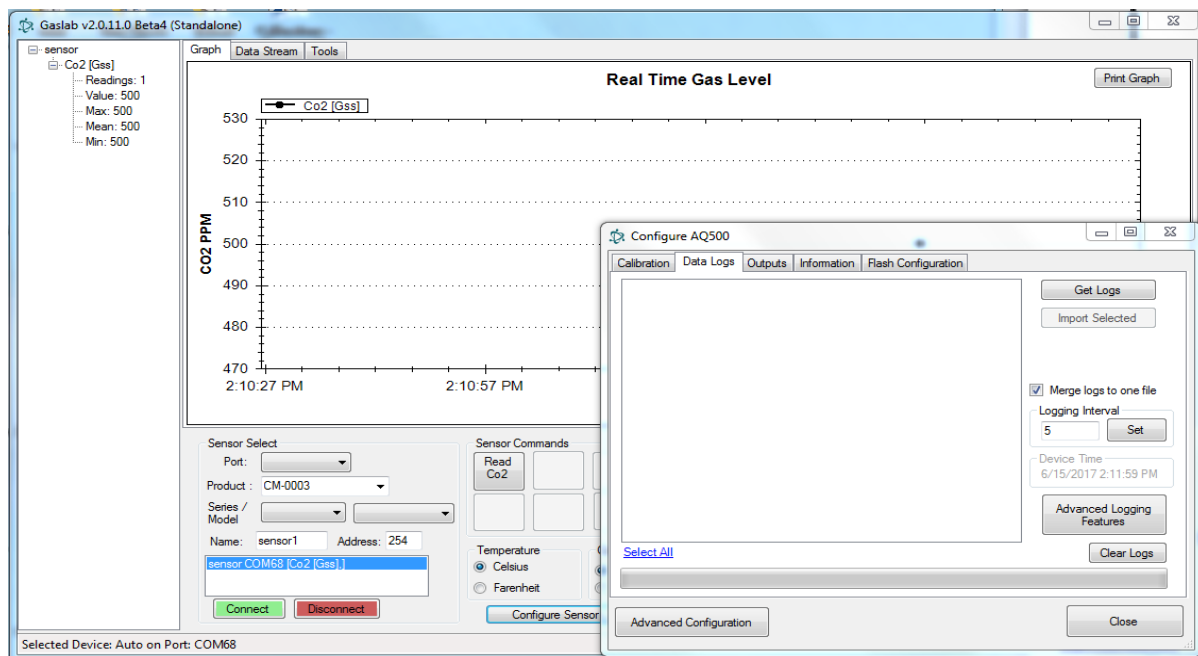


Interfacing CM-0003 CO2 Data Logger with GasLab™ Software

Configuration - Measuring CO2 - Managing Data

CM-0003 Initial Configuration

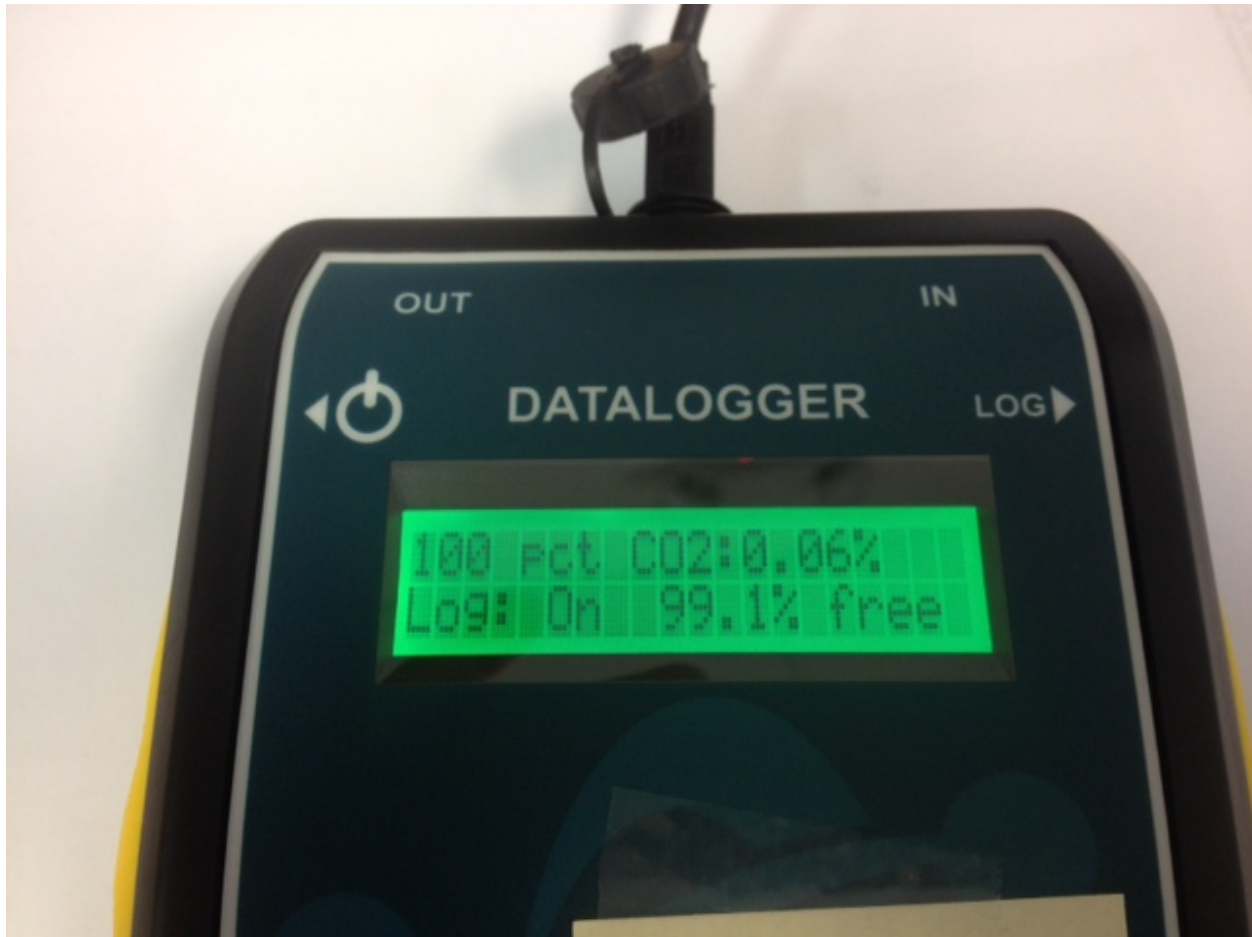
1. Connect CM-0003 to 6 Volt Power Adapter.
2. Connect USB cable from GasLab Computer to CM-0003.
3. Press Power Switch and wait for CM-0003 display to turn green.
4. Press LOG switch.
5. Open GASLAB program on the computer.
6. Open "Port:" dropdown menu.
7. Select the highest numerical COM port.
8. Open "Product:" dropdown menu.
9. Select "CM-0003"
10. Select the "Connect" button.



11. Select the "Configure Sensor" Button.
12. Select the "Data Logs" Tab.
13. Set "Logging Interval" to desired interval (5 Seconds is the factory default)
14. Select the "Set" button
15. Verify "Device Time" is set to the correct time/date.
16. Close "Configure AQ500" window.
17. Close GasLab Program.
18. Turn CM-0003 LOG Switch OFF.
19. Turn CM-0003 Power Switch OFF.
20. Unplug USB Cable, Unplug Power Adapter and remove old batteries.

Measuring CO2 and Collecting Data Log Files with the CM-0003

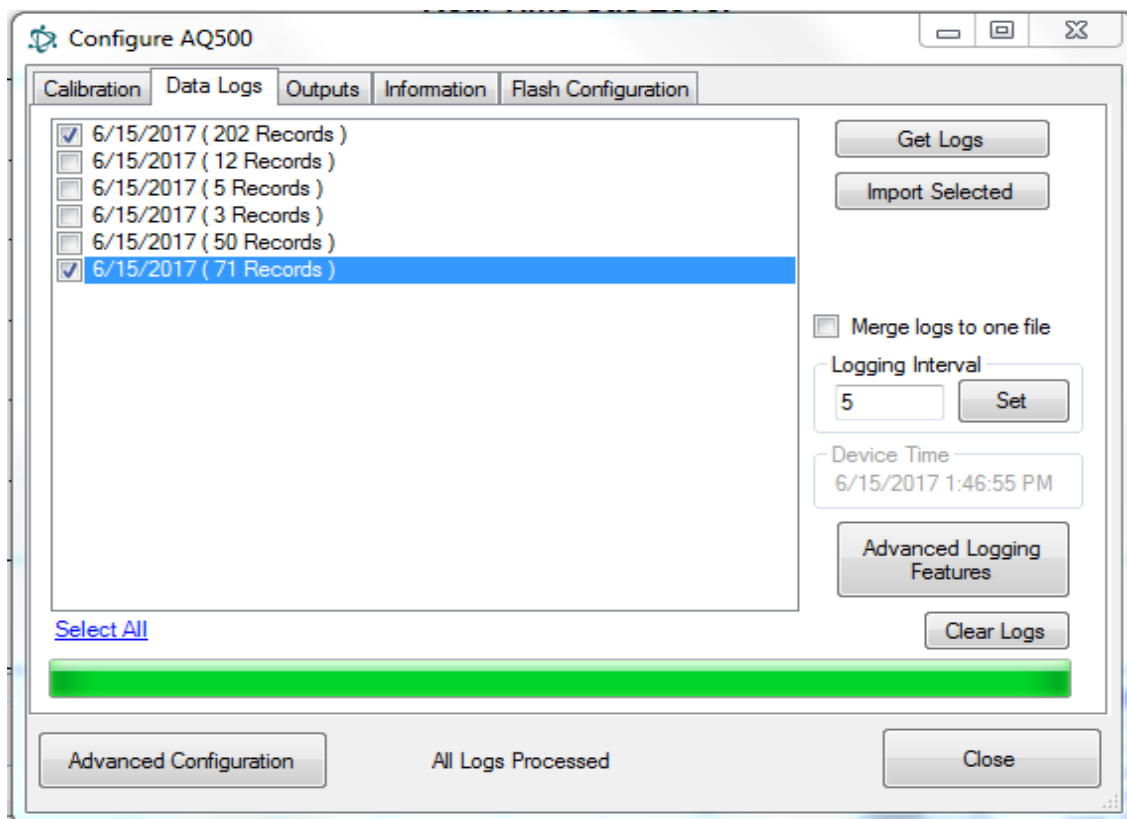
1. Install NEW Duracell Batteries in each Data Logger before each test.
2. Plug Data Logger into the Wall Outlet Power Adapter if available.
3. Connect “In” and “Out” ports as required.
4. Press the Power Button on the left side of the Data Logger.
5. Verify Data Logger completes initialization and displays CO2 values.
6. Press the “LOG” Button on the right side of the Data Logger.
7. Verify Pump is running and Display reads “Log: On”



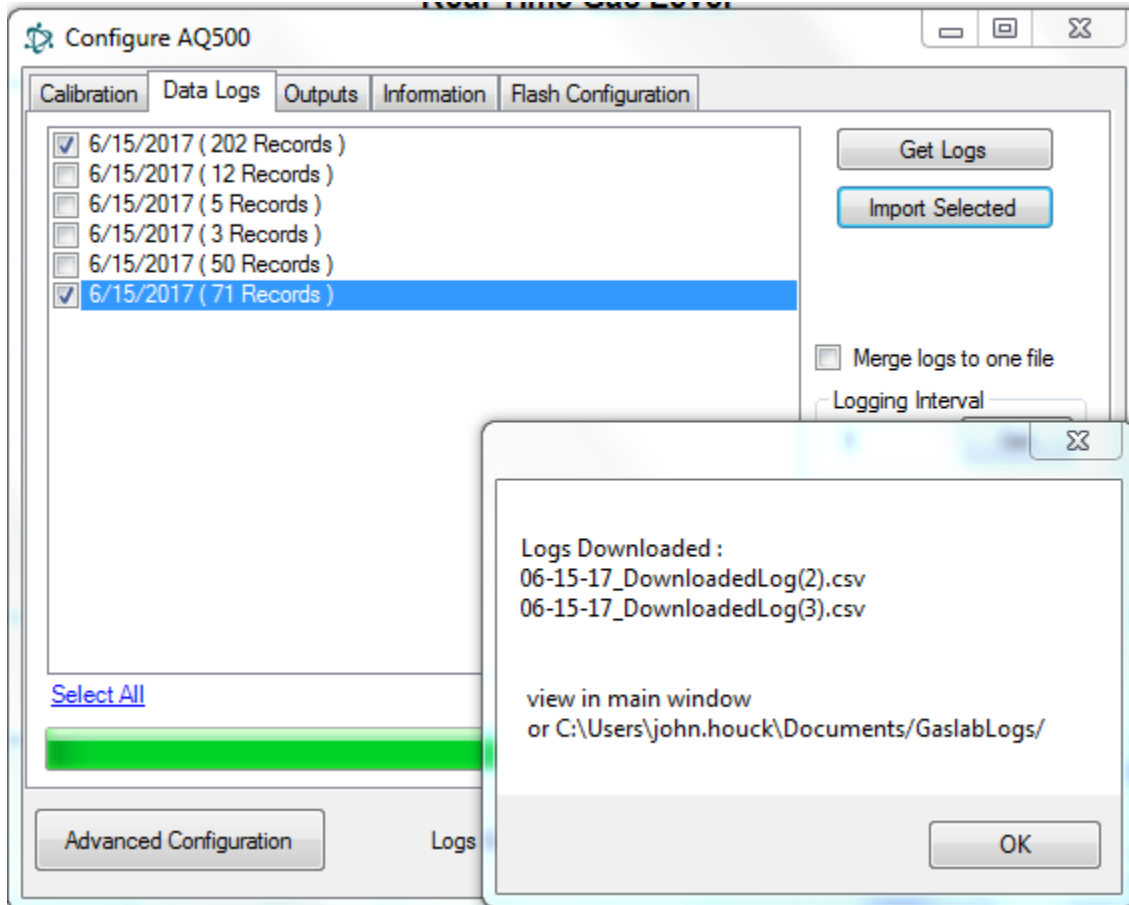
8. Data Logger will record one reading every 5 seconds and add it to the Log File as long as the unit is powered and Log Switch is ON.
9. At the end of each test, turn Log Switch OFF and turn Power Switch OFF.
10. Each time the Log Switch is turned ON (or power is cycled) a new log file will be created.

Downloading Log Files from a CM-0003 to the GasLab Computer

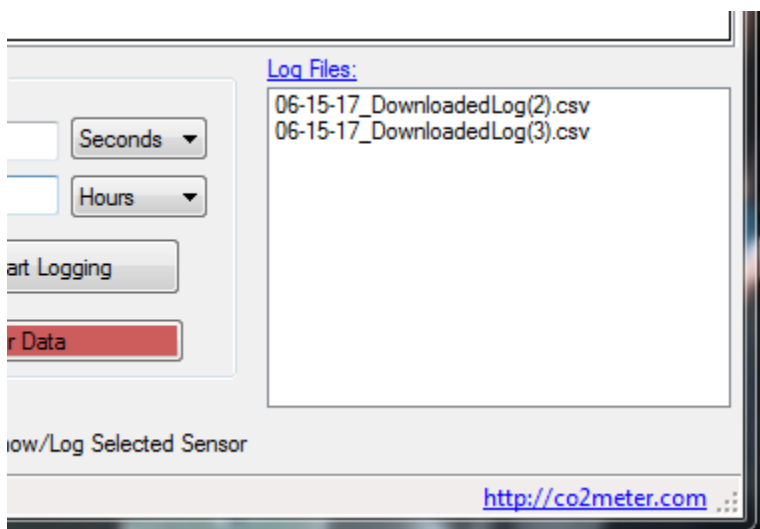
1. Connect CM-0003 to 6 Volt Power Adapter and verify operation.
2. Connect data cable from USB port on the computer to CM-0003.
3. Turn "ON" CM-0003 and wait for display to turn green.
4. Turn "ON" LOG switch.
5. Run GASLAB program.
6. Under "Sensor Select" open "Port:" menu.
7. Select highest numerical COM port.
8. Open "Product:" menu.
9. Select "CM-0003"
10. Select the Green "Connect" button.
11. Select "Configure Sensor" Button.
12. Select "Data Logs" Tab.
13. Select "Get Logs" Button and wait for files to appear in window.



14. Double click the file(s) to import (Place a check mark at the log file).
15. UN-check the box marked "Merge Logs to one file".
16. Select "Import Selected".
17. Note the name of the file and select OK.



18. Verify it has been imported into Gaslab's "Log Files" Window.



19. Single click on the file to display GasLab Graph.

20. Double click on the file to display data in Excel

Clearing Log Files from CM-0003 Memory

“Clear Logs” ONLY if you are certain all critical Log Files have been downloaded and stored on the GasLab Computer.

1. Connect cm-0003 to 6 Volt Power Adapter and verify operation.
2. Connect data cable from USB port on the computer to CM-0003.
3. Turn “ON” CM-0003 and wait for display to turn green.
4. Turn “ON” LOG switch.
5. Run GASLAB program.
6. Under “Sensor Select” open “Port:” menu.
7. Select COM port.
8. Open “Product:” menu and select “CM-0003”
9. Select the Green “Connect” button.
10. Select “Configure Sensor” Button.
11. Select “Data Logs” Tab.
12. Select “Clear Logs” button.
13. Select “Yes”
14. Verify CM-0003 Display reads “Erasing Logs”.
15. Wait for Data Logger to begin displaying CO2 readings.
16. Close GasLab Program.
17. Turn OFF LOG switch.
18. Turn OFF Power switch.
19. Unplug USB Cable, Unplug Power Adapter and remove old batteries.