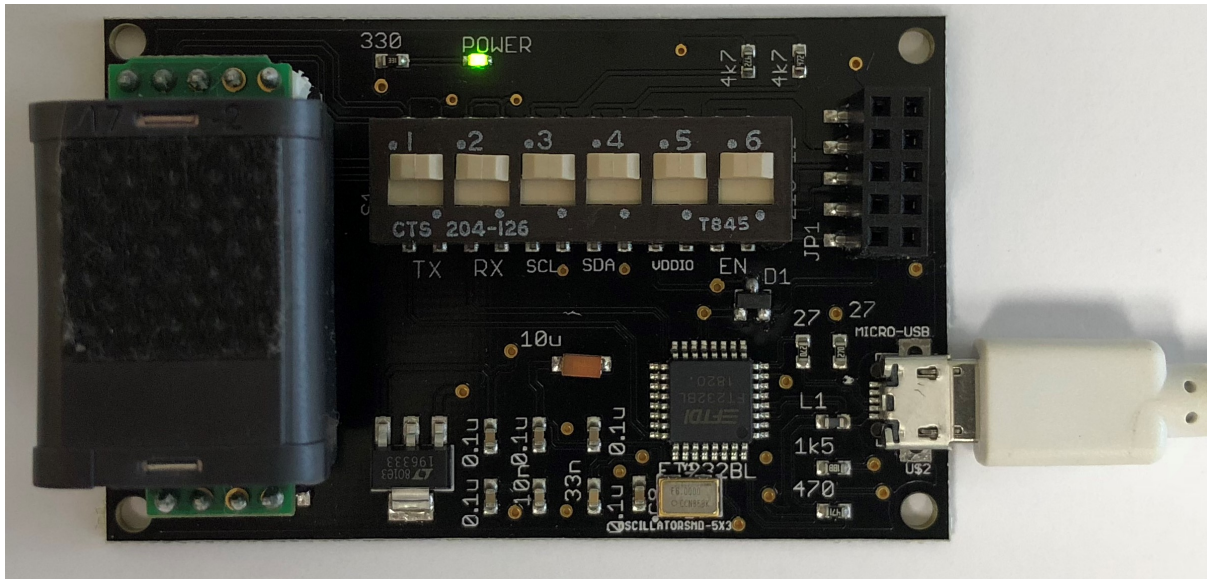


# SE-11 Development Kit Manual

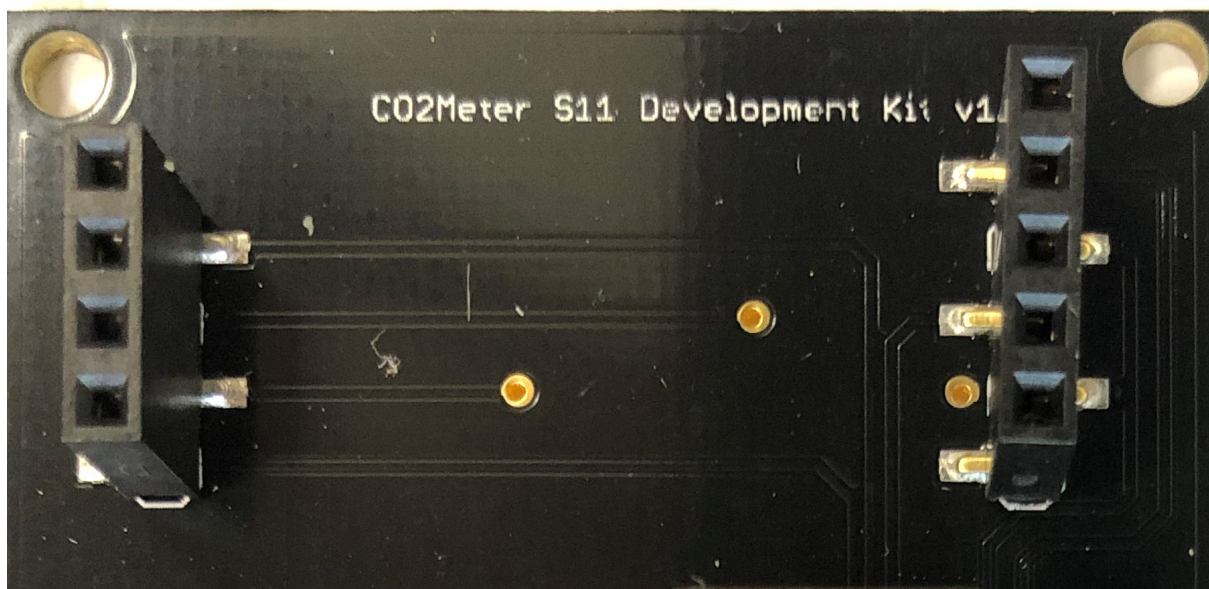


## Section 1: Learning About Your Development Kit

### • 1.1 Connectors

There are four main connectors on the S11 Development Kit, each serving a different function.

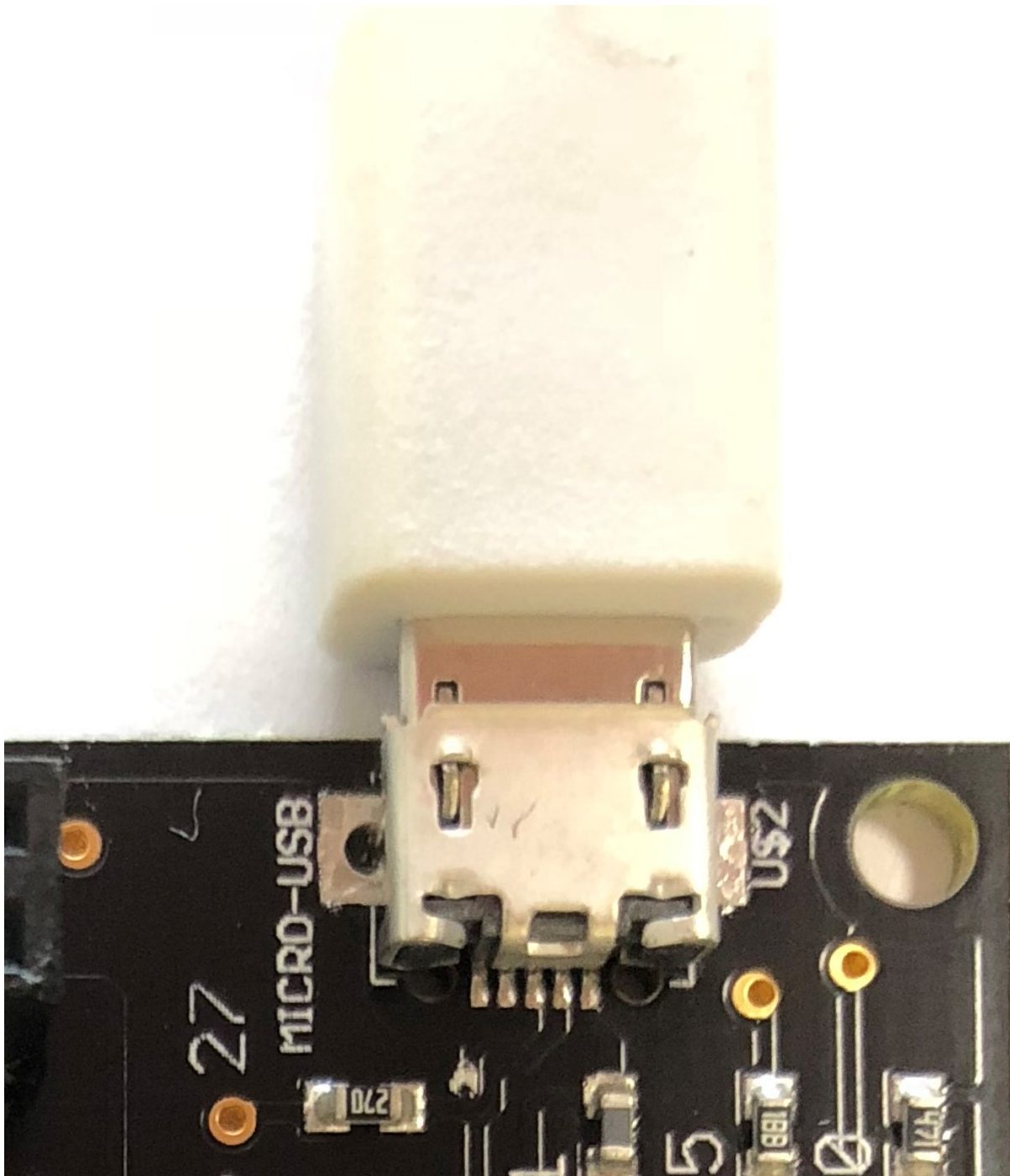
- 1.1.1 Sensor Connectors
  - 4-pin and 5-pin connectors to mount your S11 Sensor



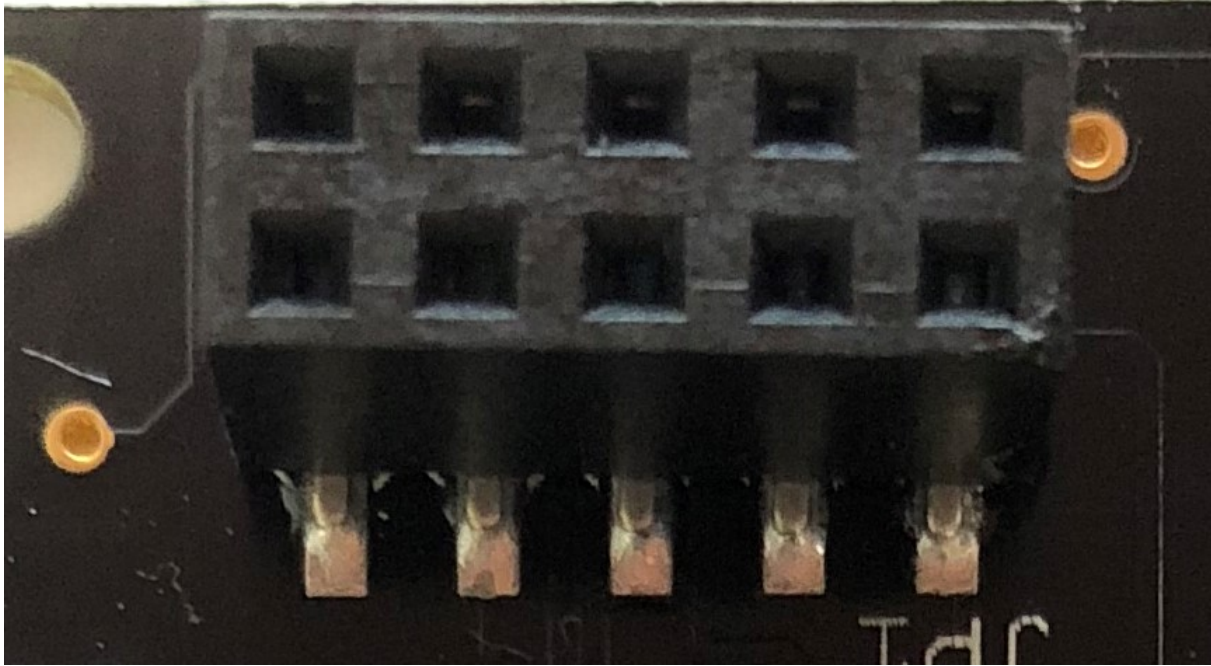
- 4-pin Connector
  - a. Enable - Sensor Enable
  - b. DVCC - Digital Voltage Out
  - c. nRDY - Sensor Ready
  - d. COMSEL - UART/I<sup>2</sup>C Comm Select

- 5-pin Connector
  - a. Ground
  - b.  $V_{BB}$  - Sensor Voltage Input
  - c.  $V_{DDIO}$  - Digital Input/Output Reference Voltage
  - d.  $R_xD/SDA$  - Sensor UART Receiver and Sensor I<sup>2</sup>C Data
  - e.  $T_xD/SCL$  - Sensor UART Transmitter and Sensor I<sup>2</sup>C Clock
- 1.1.2 USB Connector

The Micro USB Connector allows you to connect your Development Kit to your PC and appears as an FTDI Cable. You can then use your favorite application(GasLab, TeraTerm, etc.) to communicate with the S11 Sensor via UART.



- 1.1.3 Microcontroller and GasBox Connector
  - 10-pin breakout connector to easily connect your S11 Sensor to the GasBox, Arduino, Raspberry Pi, or other UART / I2C microcontroller.

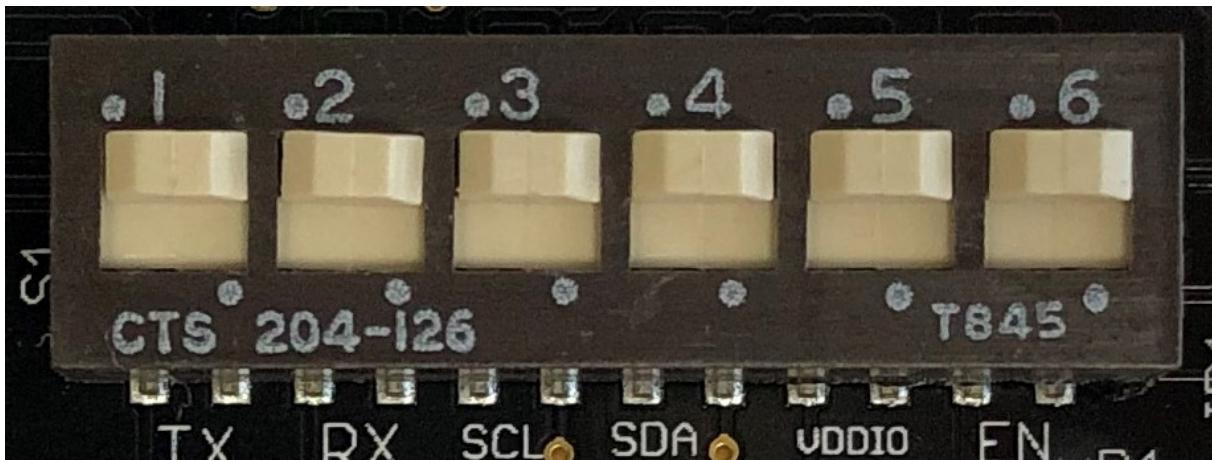


- i. Ground
- ii. Enable
- iii. S11 Voltage Input
- iv. S11 DVCC
- v. S11 VDDIO
- vi. S11 nRDY
- vii. TX / SDA
- viii. COMSEL
- ix. RX / SCL

## • 1.2 Switch Settings

### ○ 1.2.1 Switch Functions

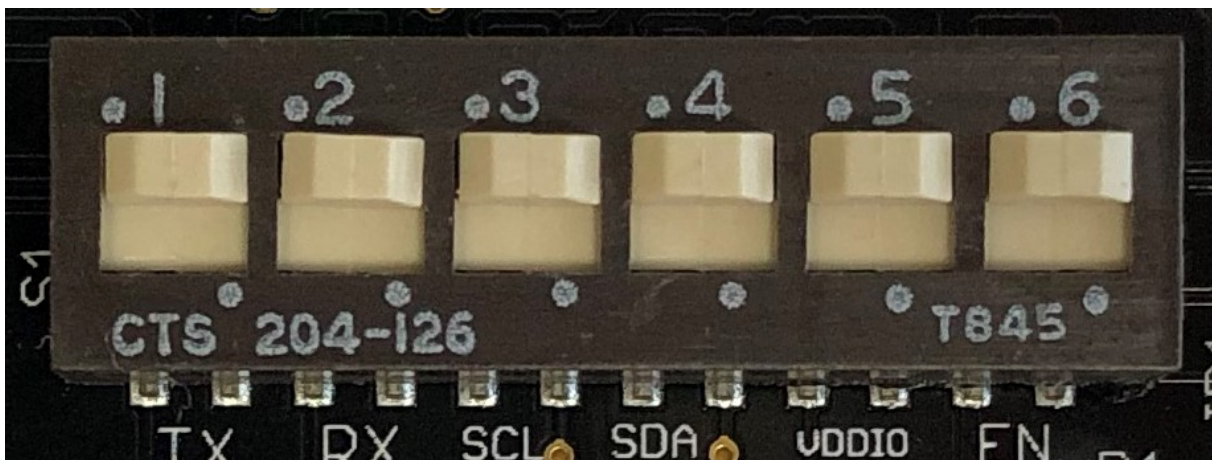
- 1: S11 RX Selector - Selects the source of transmit from USB or a microcontroller connected to the 10-pin Connector (Slide Up for USB and Slide Down for Microcontroller)
- 2: S11 TX Selector - Selects the source of the receiver from USB or a microcontroller connected to the 10-pin Connector (Slide Up for USB and Slide down for Microcontroller)
- 3: I<sup>2</sup>C SCL Pull Up Resistor - Slide down to add a Pull Up Resistor to your I<sup>2</sup>C Serial Clock attached to the 10-pin Microcontroller Connector. If using USB connector, leave this switch function Up.
- 4: I<sup>2</sup>C SDA Pull Up Resistor - Slide down to add a Pull Up Resistor to your I<sup>2</sup>C Serial Data attached to the 10-pin Microcontroller Connector. If using USB Connector, leave this switch function Up.
- 5: VDDIO - The S11 Sensor requires a reference voltage for the Communications. To use the same voltage as what is supplied to power the S11 Sensor, keep the switch function up, to use a different IO Voltage supplied on the 10-pin Connector, push the switch down. For standard USB Connection, leave this switch function up.
- 6: Enable - The S11 Sensor has the ability to turn on and off the Sensor element to save power. To have the Sensor always enabled and taking measurements, slide the switch function up. If you will have a microcontroller connected to the 10-pin microcontroller connector and enabling and disabling the sensor, slide the switch function down.



- 1.2.2 Typical Switch Settings

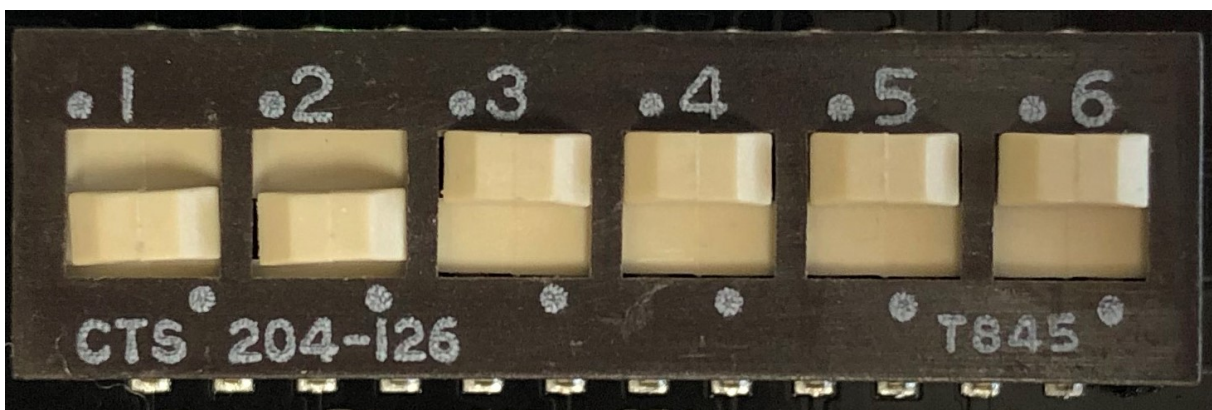
- USB

To use via USB UART with GasLab or any other terminal application, keep all slide switch functions in the up position



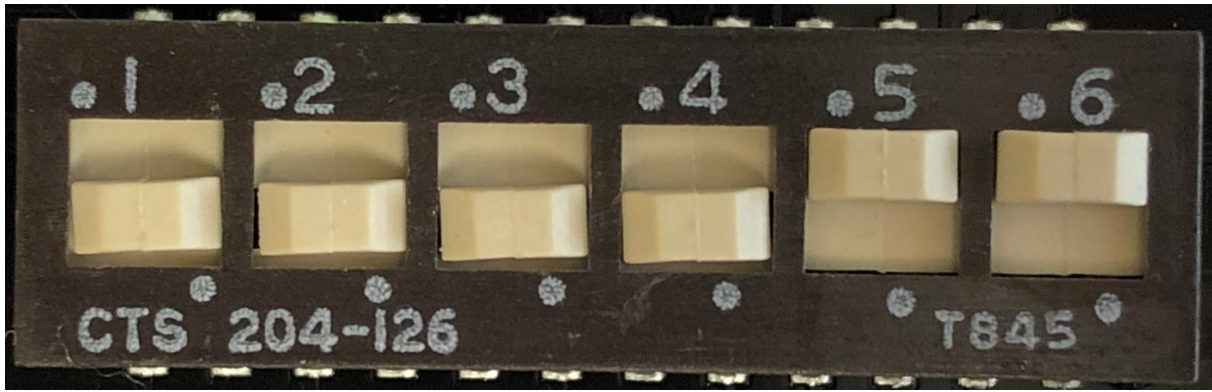
- Simple Microcontroller UART

To simply connect to a microcontroller via UART, slide switch functions 1 and 2 down, and leave the rest of the switch functions in the up position



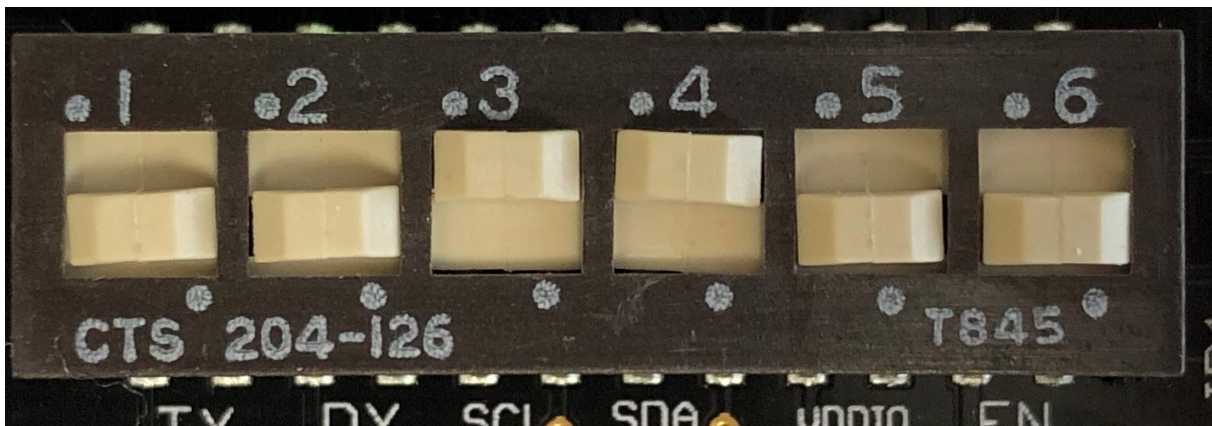
- Simple Microcontroller I<sup>2</sup>C with no Pull Up Circuit

To attach to a microcontroller via I<sup>2</sup>C, we've added the convenience of 4.7kOhm pull up resistors. This way you can connect your I<sup>2</sup>C wiring directly without a circuit in between. To use this function, slide switch functions 1, 2, 3, and 4 to the down position, leave switch functions 5 and 6 in the up position



- o Full Microcontroller UART Support

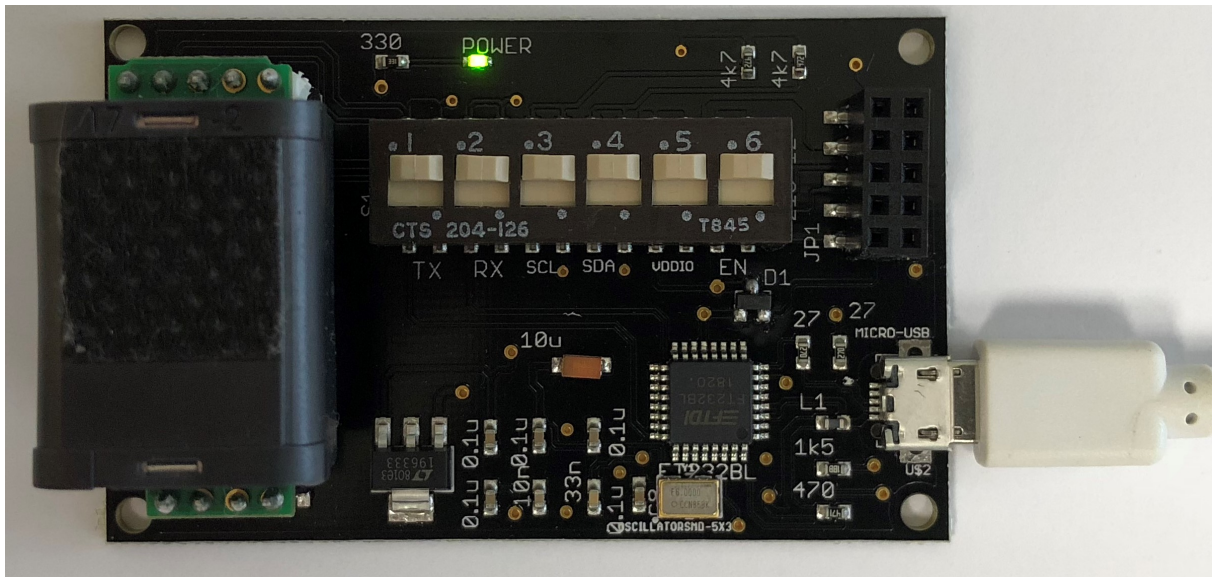
To attach a microcontroller that will control the S11 Sensor being integrated into a system, slide switch functions 1, 2, 5, and 6 to the down position, and slide switch functions 3 and 4 to the up position



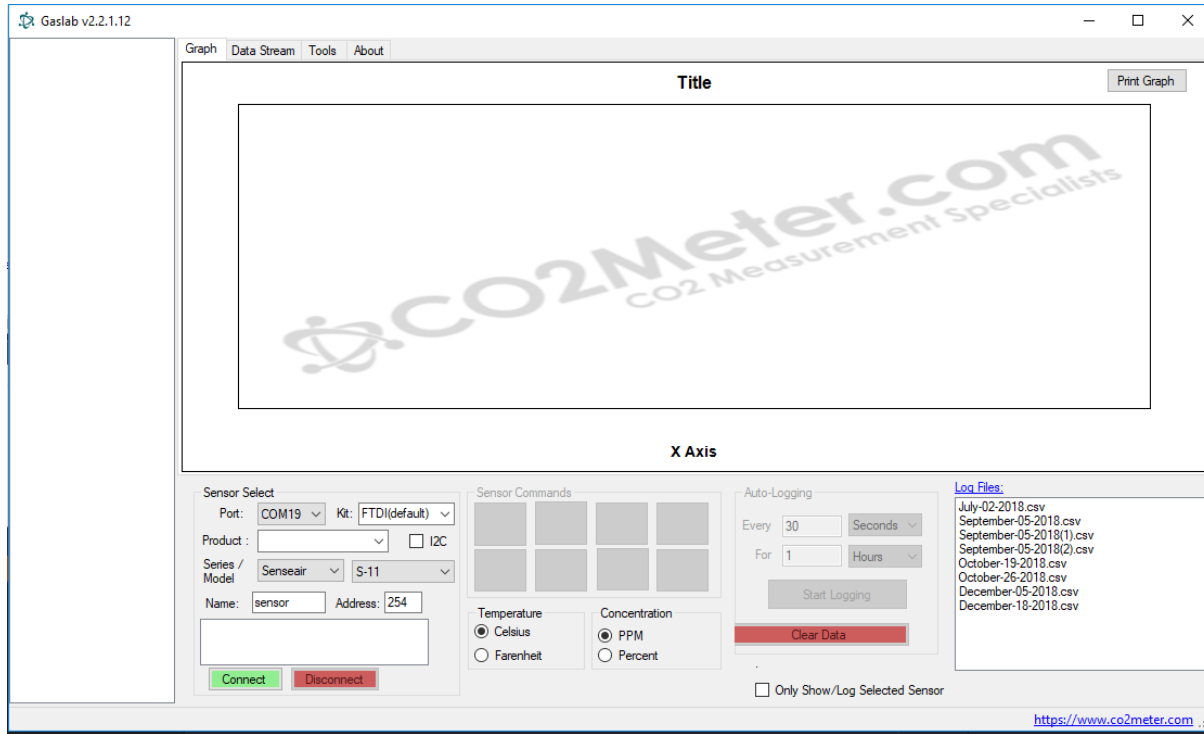
## Section 2: Connecting to GasLab with USB

1. Connect a micro USB Cable from your PC to the Development Kit

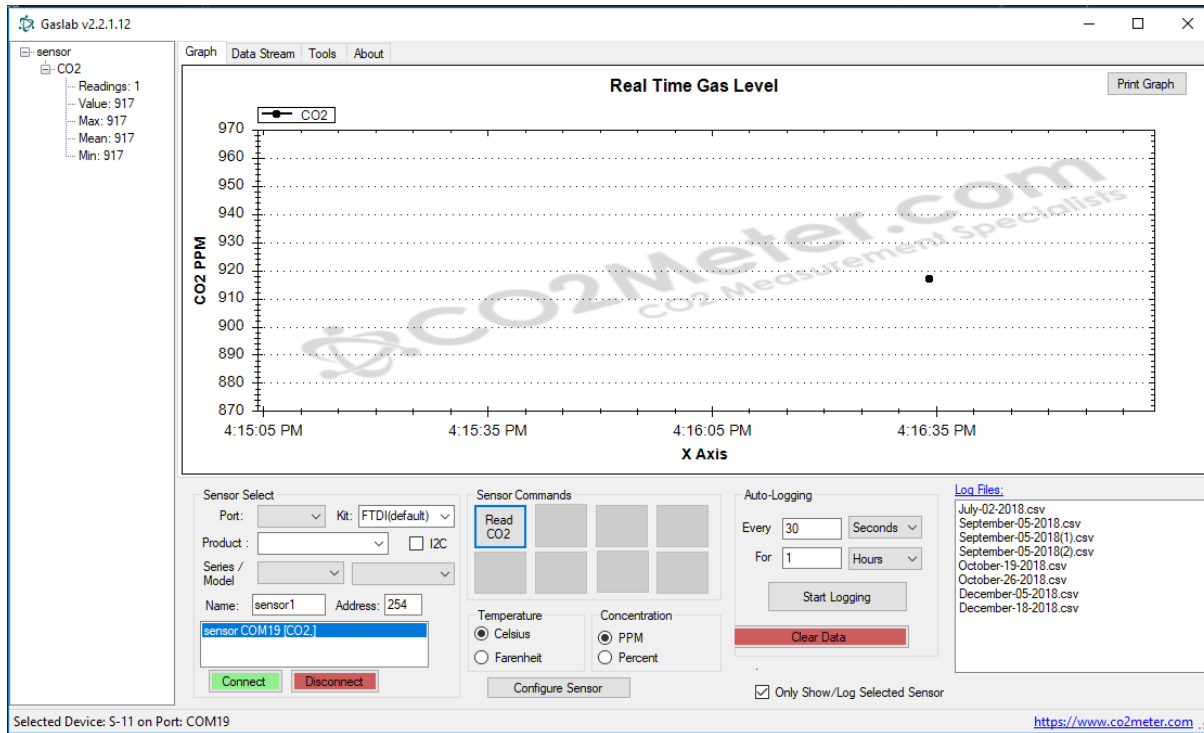
Ensure the Switch Setting are Correct. Refer to section 1.2.2 for more help



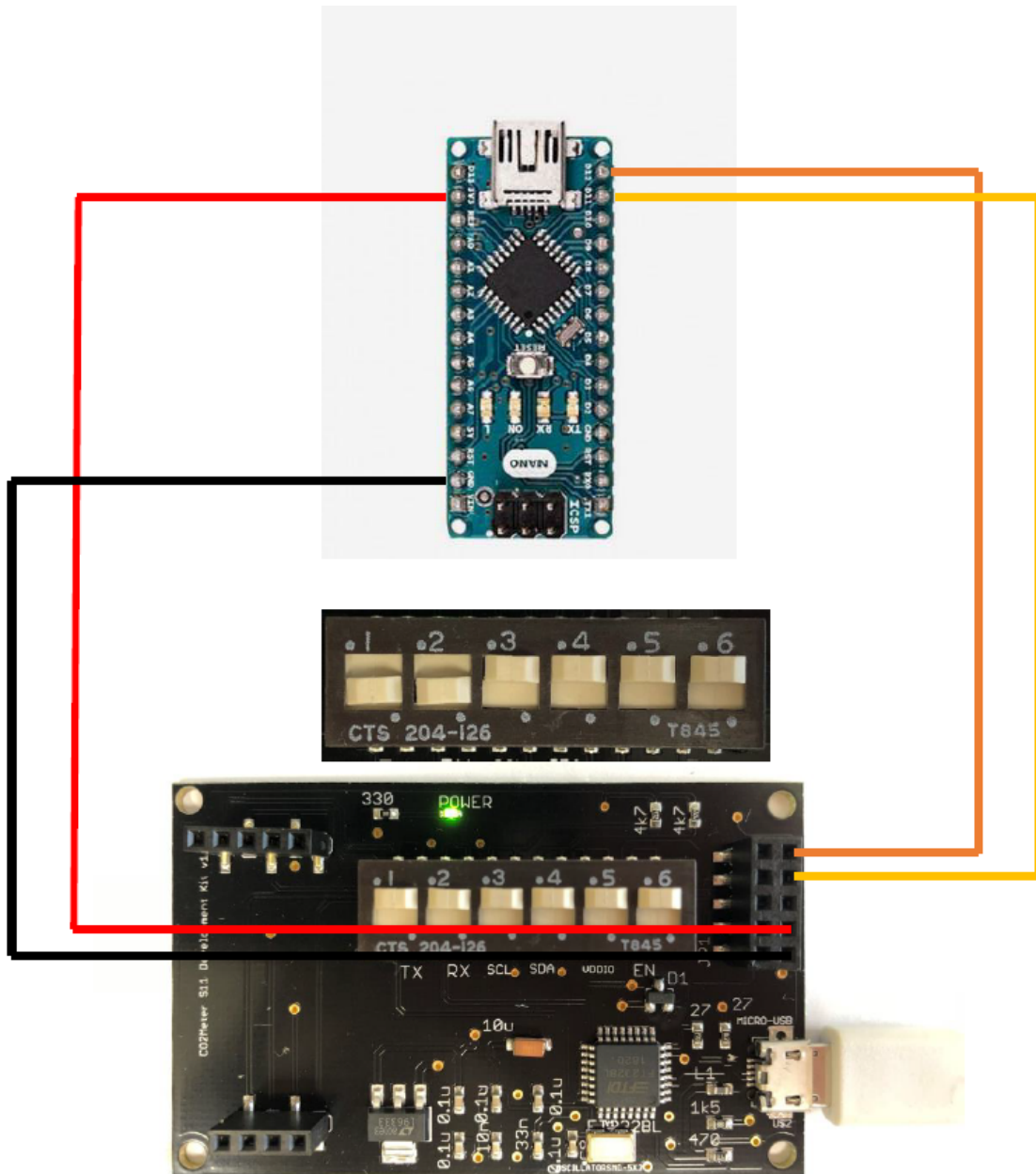
2. Open GasLab on your PC, select the COM Port, use FTDI as the Kit, and select Senseair / S-11 for your Series / Model



3. Click the Connect Button and click Read CO2 to get readings



## Section 3: Connecting to Arduino



> Wiring

Diagram for UART connections to Arduino

```
#include <SoftwareSerial.h>

#define S11_TX 12
#define S11_RX 11
SoftwareSerial s11 = SoftwareSerial(S11_TX, S11_RX);

void setup() {
  // put your setup code here, to run once:
  s11.begin(9600);
  Serial.begin(115200);
}

void loop() {
  // put your main code here, to run repeatedly:
  byte co2Read[] = { 0xfe, 0x04, 0x00, 0x03, 0x00, 0x01, 0xd5, 0xc5 };
  s11.write(co2Read, 8);

  int millisec = 0;
  while(s11.available() <= 0) {
    delay(1);
    millisec++;
  }
}
```

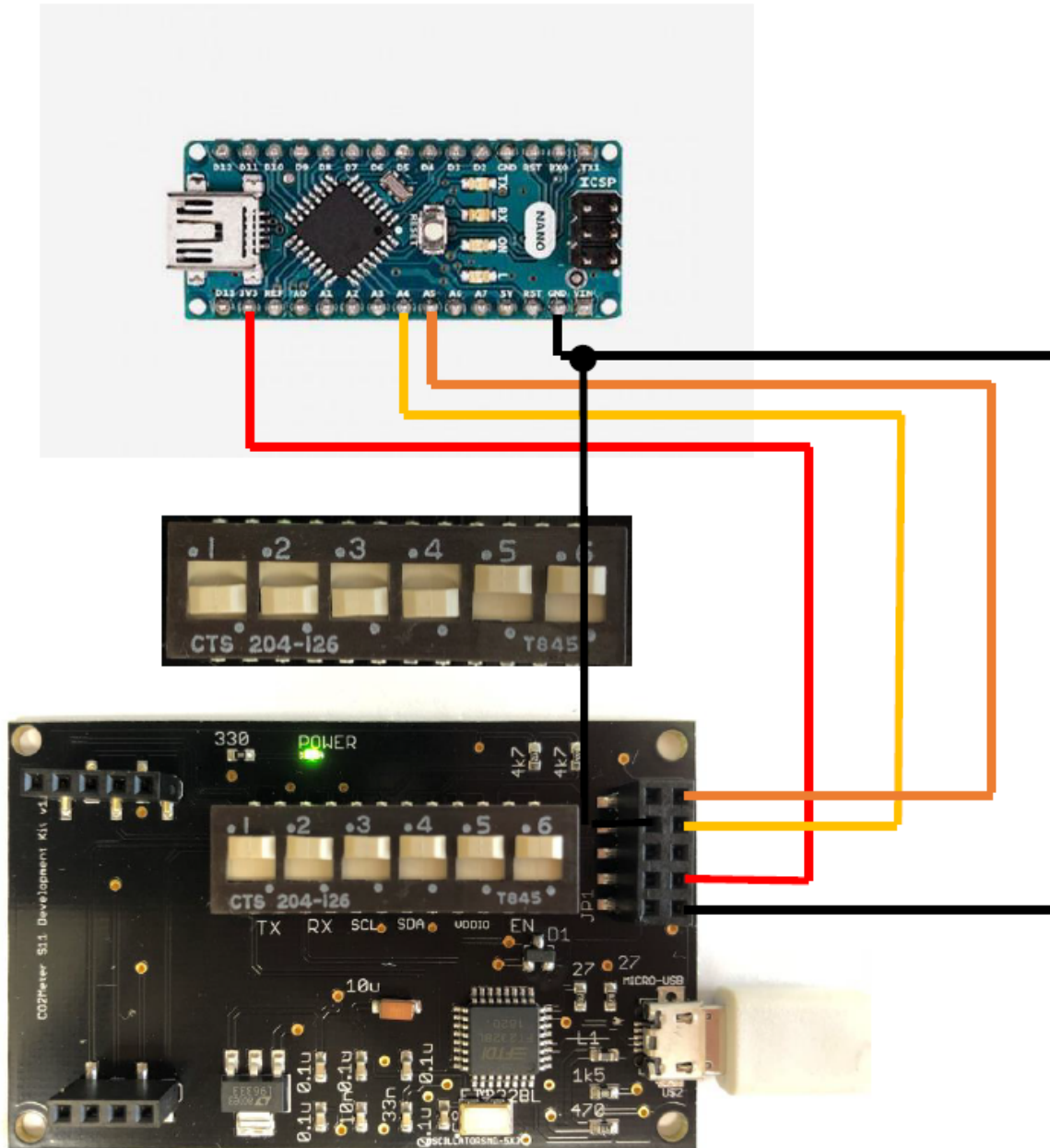
```
    if (millisec > 1500) break;
  }
  delay(50);

  if (s11.available() <= 0) {
    Serial.println("no data available");
    return;
  }

  int s11ResponseSize = s11.available();
  byte s11Response[s11ResponseSize];
  int count = 0;
  while (count < s11ResponseSize) {
    s11Response[count] = s11.read();
    count++;
  }

  int co2 = (s11Response[3] << 8) | s11Response[4];
  Serial.print("CO2 Concentration: ");
  Serial.print(co2);
  Serial.print("\n");
  delay(2000);
}
```





> Wiring

Diagram for I2C connections to Arduino

```
#include <Wire.h>

char FIND_ADDRESS = 'F';
char READ_CO2 = 'R';
byte address = 0x68;

void setup() {
  // put your setup code here, to run once:
  Wire.begin();
  Wire.setClock(10000);
  Serial.begin(115200);
  Serial.println("Type F to find all devices on I2C bus and type R to read CO2 from S-11");
}

void sendDataAndReadToAddress(byte reg, byte address, int bufferSize, int readCount) {
  Wire.beginTransmission(address);
  for (int k = 0; k < bufferSize; k++) {
    Wire.write(reg);
  }
  Wire.endTransmission(false);
}
```

```

delay(20);

Wire.requestFrom(address, readCount);

delay(10);
int nBytes = Wire.available();
byte buff[nBytes];

int i = 0;
while (Wire.peek() != -1) {
  buff[i] = Wire.read();
  Serial.print(buff[i],HEX);
  Serial.print(" ");
  i++;
}
//Serial.write(buff, nBytes);
Serial.print('\n');

int co2 = (buff[0] << 8) | buff[1];
Serial.print("CO2 Concentration: ");
Serial.print(co2);
Serial.print("\n");
}

void getAllAddress() {
  //Serial.println("Looking for addresses");
  byte error, address;
  for (address = 1; address < 128; address++) {
    Wire.beginTransmission(address);
    error = Wire.endTransmission();
    delay(5);

    if (error == 0) {
      Serial.print(address, HEX);
      Serial.print(" ");
    }
  }
}

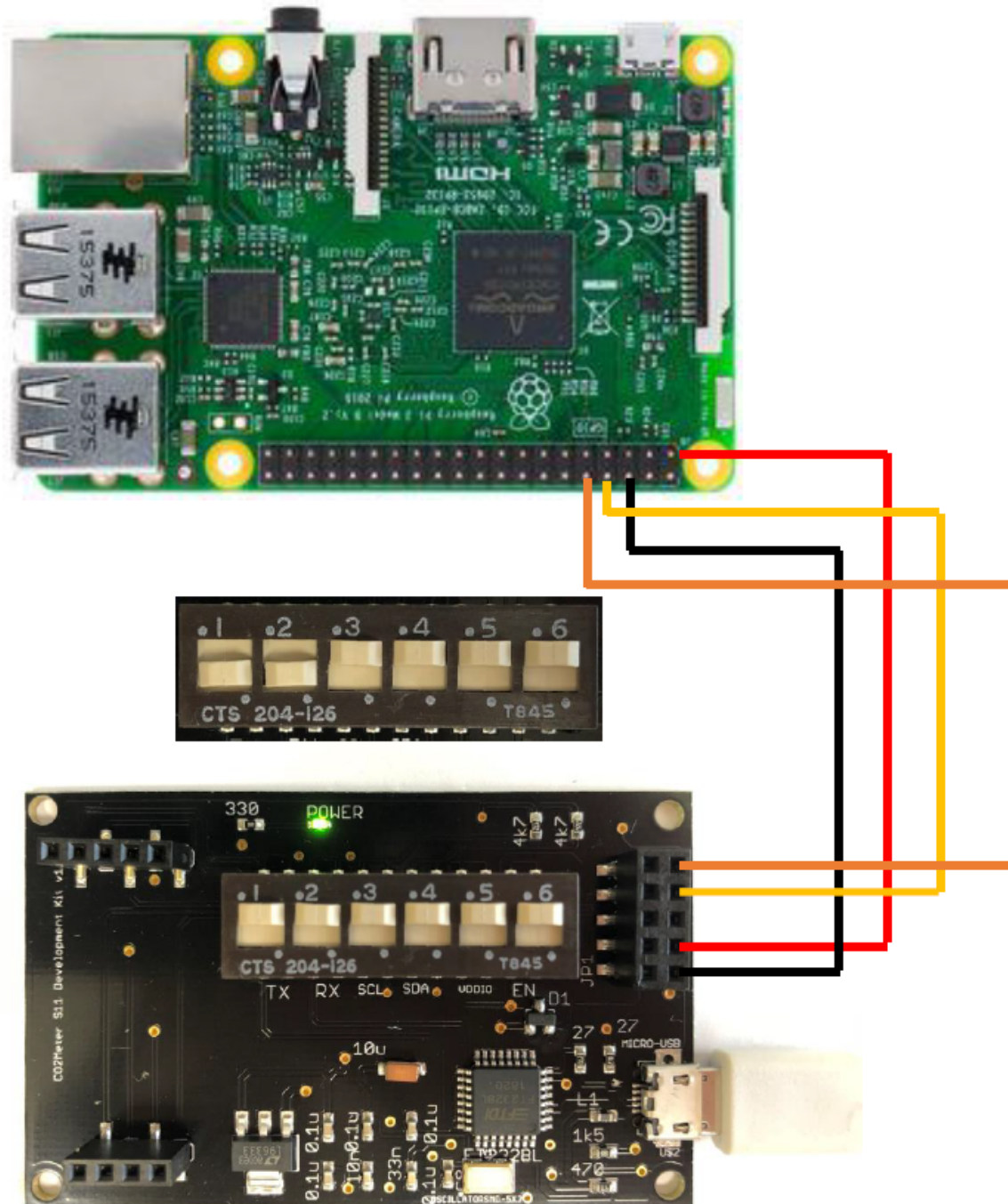
void loop() {
  // put your main code here, to run repeatedly:
  while (Serial.available() == 0) { }
  //Delay 10ms to ensure we get the whole message
  delay(10);

  int serialBufferSize = Serial.available();
  byte buff[serialBufferSize];

  int i = 0;
  while (Serial.peek() != -1 && i < serialBufferSize) {
    buff[i] = (byte)Serial.read();
    i++;
  }
  char command = (char)buff[0];
  if (command == FIND_ADDRESS) {
    getAllAddress();
  } else if (command == READ_CO2) {
    //The LSB nibble of the second byte contains the number of data bytes being read
    //Add 2 for the Command byte and Checksum
    int bufferSize = 1;
    int readCount = 2;
    sendDataAndReadToAddress(0x06, address, bufferSize, readCount);
  } else {
    Serial.println("Invalid Command... Type F to find all devices on I2C bus and type R to read CO2 from S-11");
  }
}
}

```

## Section 4: Connecting to Raspberry Pi



> Wiring

Diagram for UART connections to Raspberry Pi

```
import serial
import time
import fcntl
import binascii

#for usb leave uncommented
ser = serial.Serial("/dev/ttyUSB0", baudrate=9600, timeout=1.5)
#to usb the UART GPIO Pins, comment the above line and uncomment the line below
#ser = serial.Serial("/dev/ttyAMA0", baudrate=9600, timeout=1.5)
ser.flush()
ser.close()
time.sleep(1)

while 1:
```

```

ser.open()
ser.flush()
ser.write("\xFE\x04\x00\x03\x00\x01\xD5\xC5")
time.sleep(1.2)
timeout=0
while ser.inWaiting() <= 0:
    time.sleep(0.1)
    timeout = timeout + 1
    if timeout > 10:
        print("timed out with no data")
        break
resp = ser.read(ser.inWaiting())
ser.close()
print("size of response: " + str(len(resp)))
if len(resp) >= 7:
    binascii.hexlify(bytearray(resp))
    high = ord(resp[3])
    low = ord(resp[4])
    co2 = (high*256) + low
    print(str(co2))

```

## Contact us: We're here to help!

If the troubleshooting guide above doesn't help you solving your problem or for more information, please contact us using the information below.



Support@CO2Meter.com

(386) 256-4910 (M-F 9:00am–5:00pm EST)

[www.CO2Meter.com](http://www.CO2Meter.com)

See CO2Meter, Inc. Terms & Conditions at:

[www.CO2Meter.com/pages/terms-conditions](http://www.CO2Meter.com/pages/terms-conditions)

### CO2Meter, Inc.

131 Business Center Drive

Ormond Beach, FL 32174

Phone: 386-872-7665 | Fax: 866-422-2356

Email: Sales@CO2Meter.com



131 BUSINESS CENTER DRIVE

ORMOND BEACH, FL 32174

SUPPORT (386) 256-4910

SALES (877) 678-4259

[WWW.CO2METER.COM](http://WWW.CO2METER.COM) | [SALES@CO2METER.COM](mailto:SALES@CO2METER.COM)