

450 ml/minute & 10,000 hour Micro Gas Pump



These pumps are constructed from molded, glass filled nylon with stainless steel tubing connectors and a brushless drive motor. They are fitted with Nitrile / Silicon diaphragm and valves. The pump uses efficient push-fit connectors designed for 2.4mm bore flexible tubing.

Features

- High Efficiency
- Variable flow rate and low power consumption
- Small size, light weight
- Head can be realigned to one of 4 positions for easy inlet and outlet tube connection

Specifications

Flow rate.....	450 ml/min.
Maximum pressure.....	1,000 mbar
Maximum vacuum.....	-480 mbar
Operating temperature.....	-20 to 100 °C
Rated Power	2-6VDC 180mA
Noise levels.....	<15 dB (measured at a distance of 1 m with a 50dB ambient noise level)
Life (MTBF).....	10,000 hours
Weight.....	25 grams
IP rating.....	IP41
Motor type.....	Brushless drive
Overall size, mm (in).....	36 (1.41) x 27 (1.06) x 17 (0.67)

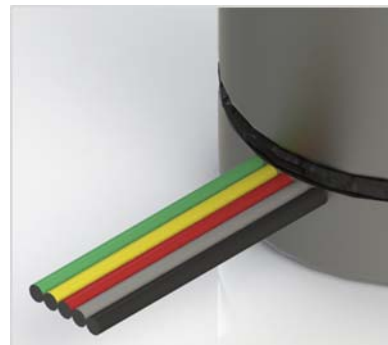
Applications

- Medical devices
- Gas detection and monitoring
- Precision flow
- Battery & solar operated systems

Wire Legend

Color	Function
Black	Ground
Grey	VM (Speed: 2-6 VDC)
Red	Vcc (2-6 VDC)
Green	CW / CCW
Yellow*	RPM

*Connection not required



Dimensions

NOTE
DIMENSIONS BASED
ON BRUSHLESS
MOTOR VARIANT

